

Stock: 4305

Shih-Kuen Plastics

2025 Investor Conference

Corporate Information Session

December 05, 2025



Disclaimer

This presentation is based on information obtained by the Company from various sources.

Some information may be subject to future uncertainties and may differ from the Company's original description of future prospects.

If there is any change or adjustment in the future, please refer to the announcement information of the Public Information Observatory as the basis.

Agenda

Company Overview

Industry Overview

Operation Overview

Business Performance

Q & A



Company Overview

Founded: 1986

Plant Size:

196K sq. ft.

Capital: NT\$550.14 Million

Date of Listing:

September 28, 2000

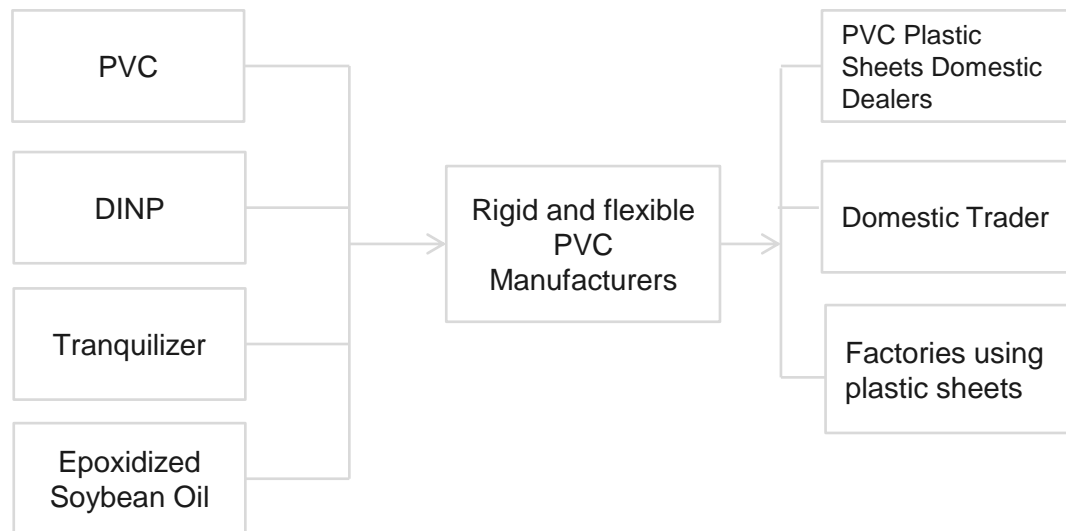
Chairman : Lin, Chang-Fu

Main Business:

Manufacturing, Trading, Importing
and Exporting of Polyvinyl Chloride
PVC Sheets

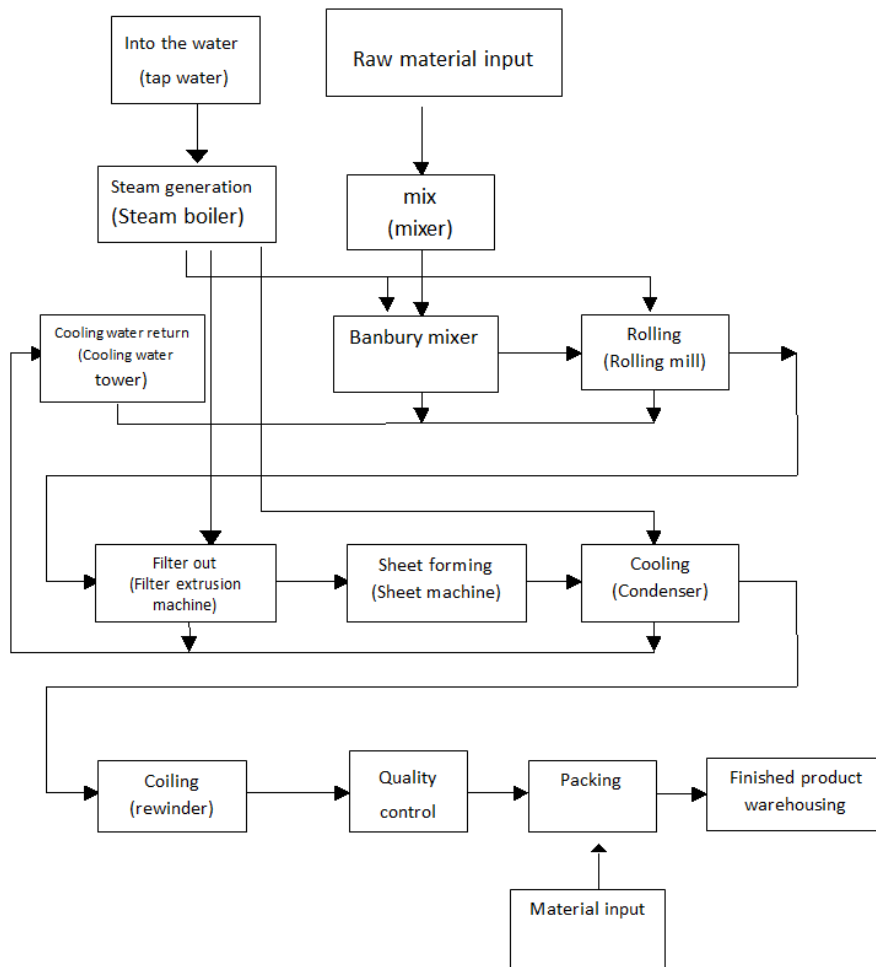
Industry Overview

Upstream and downstream
of Supplier Chain



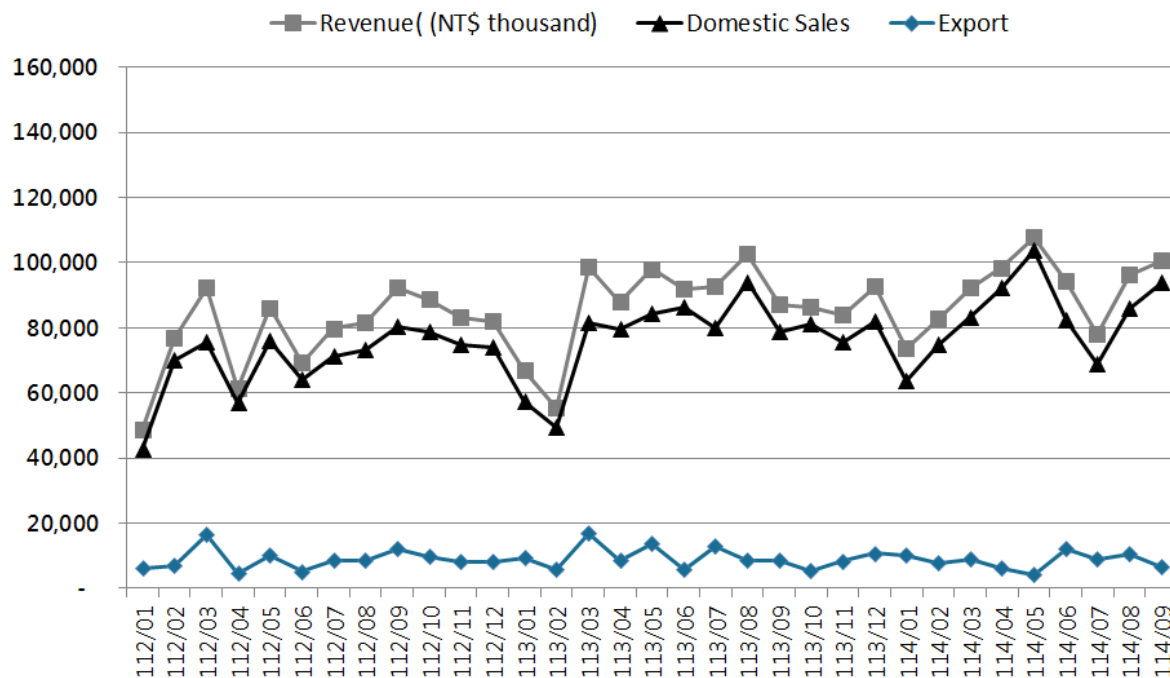
Production Process

From PVC Resin to Final Products



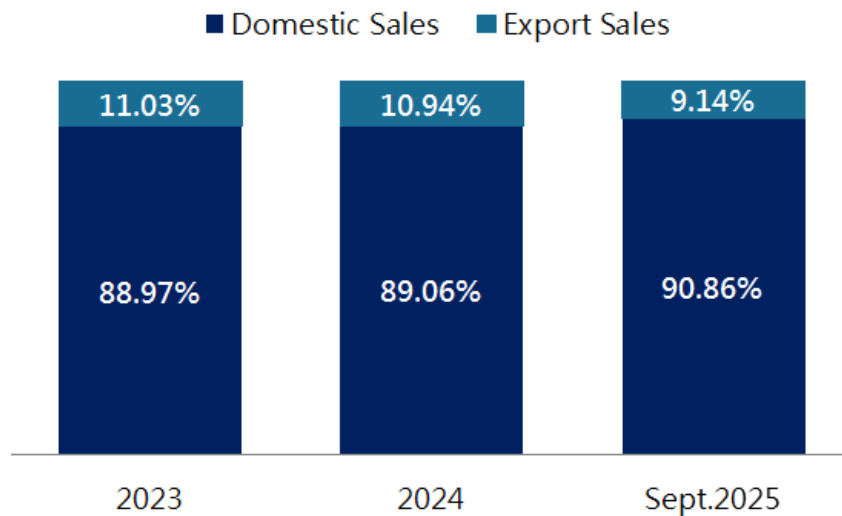
Operational Overview

Monthly Revenue



Operational Overview

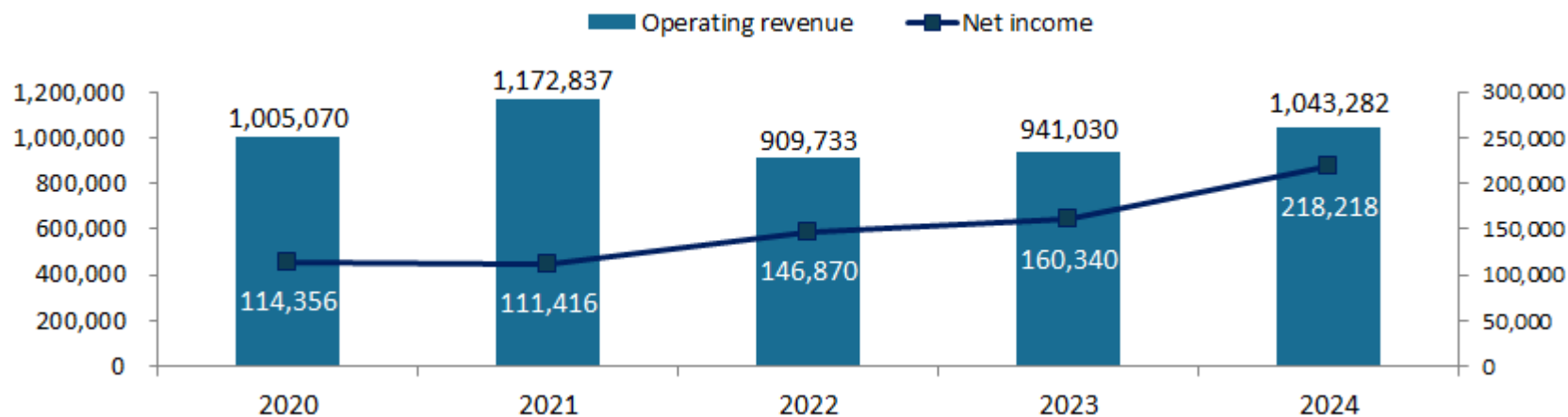
Sales Ratio breakdown



Operational Overview

Operating revenue & Net income

In NT\$ thousand



Financial Performance

Balance Sheet

In NT\$ thousand

	2025/09/30(reviewed) (Amount)	%	2024/12/31(checked) (Amount)	%	2023/12/31(checked) (Amount)	%
Total Current Assets	1,104,487	79	1,107,317	79	1,012,774	78
Other Current Assets	301,561	21	287,059	21	285,059	22
Total Assets	1,406,048	100	1,394,376	100	1,297,833	100
Total Current Liab.	210,904	15	165,110	12	153,361	12
Other Current Liab.	8,842	1	10,708	1	8,985	1
Total Liabilities	219,746	16	175,818	13	162,346	13
Total Equity	1,186,302	84	1,218,558	87	1,135,487	87
Total Liab. & Equity	1,406,048	100	1,394,376	100	1,297,833	100

Financial Performance

Income Statement

In NT\$ thousand

	2025 Q3 (reviewed)	%	2024 Q3 (reviewed)	%	2023 Q3 (reviewed)	%
Gross Sales	823,797	100	780,663	100	687,381	100
Gross Profit	259,627	32	207,934	27	176,060	25
Operating Income	197,452	24	149,228	19	120,427	17
Net Income	143,789	17	158,141	20	139,256	20
Earning Per Share	2.61		2.87		2.53	

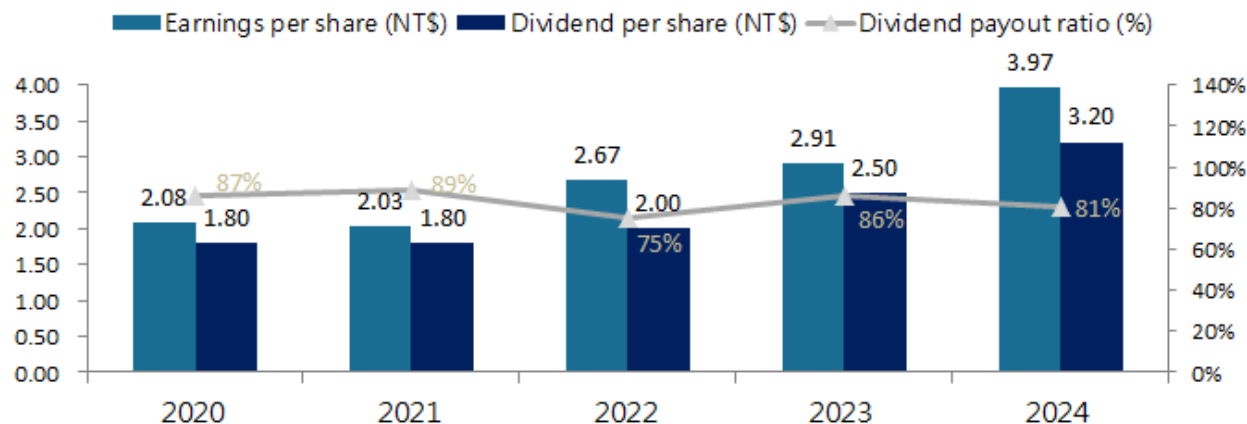
Financial Performance

Financial analysis

Item / Year	2020	2021	2022	2023	2024
Debt ratio (%)	12.50	14.70	11.28	12.51	12.61
Current Ratio (%)	703.84	583.04	742.57	660.39	670.65
Quick Ratio (%)	621.16	530.97	687.55	609.48	603.58
Average AR turnover (times)	5.08	4.86	4.26	5.44	5.10
Turn on total assets (%)	9.74	9.38	12.06	12.72	16.22
Turn on total equity (%)	11.21	10.85	13.86	14.44	18.54
Net margin (%)	11.38	9.50	16.14	17.04	20.92

Financial Performance

EPS and Dividend distribution



	2020	2021	2022	2023	2024
Earnings per share (NT\$)	2.08	2.03	2.67	2.91	3.97
Dividend per share (NT\$)	1.80	1.80	2.00	2.50	3.20
Dividend payout ratio (%)	87%	89%	75%	86%	81%



Q & A

Thank you.