

Stock: 4305

Shih-Kuen Plastics

2022 Investor Conference

Corporate Information Session

December 06, 2022



Disclaimer

This presentation is based on information obtained by the Company from various sources.

Some information may be subject to future uncertainties and may differ from the Company's original description of future prospects.

If there is any change or adjustment in the future, please refer to the announcement information of the Public Information Observatory as the basis.

Agenda

Company Overview

Industry Overview

Operation Overview

Business Performance

Q & A



Company Overview

Founded: 1986

Plant Size:

196K sq. ft.

Capital: NT\$550.14 Million

Date of Listing:

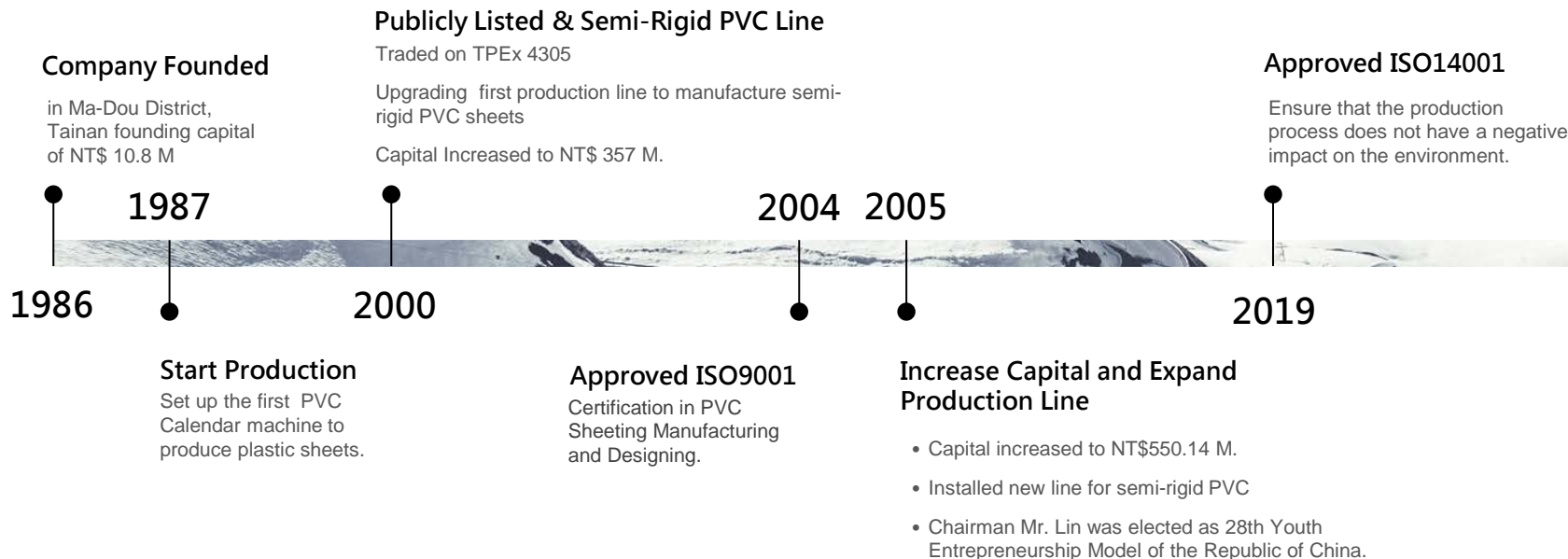
September 28, 2000

Chairman : Lin, Chang-Fu

Main Business:

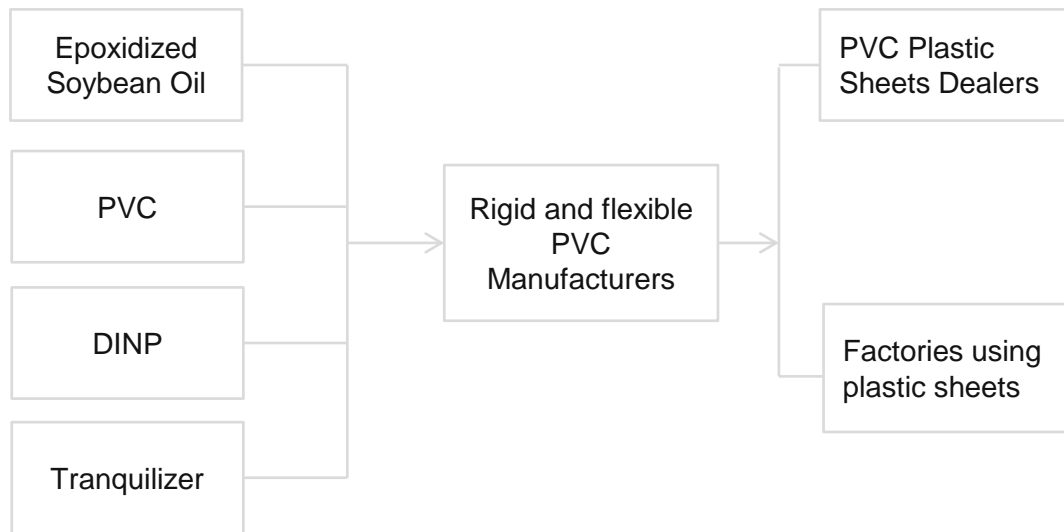
Manufacturing, Trading, Importing
and Exporting of Polyvinyl Chloride
PVC Sheets

Milestones



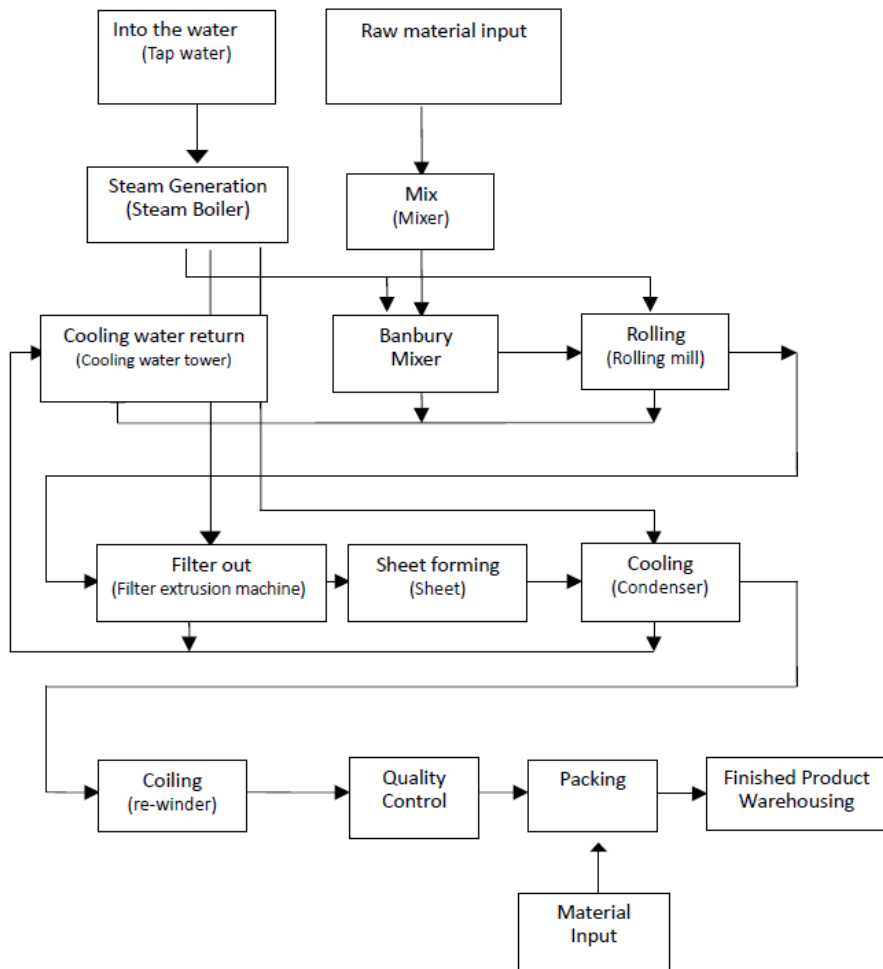
Industry Overview

Upstream and downstream
of Supplier Chain



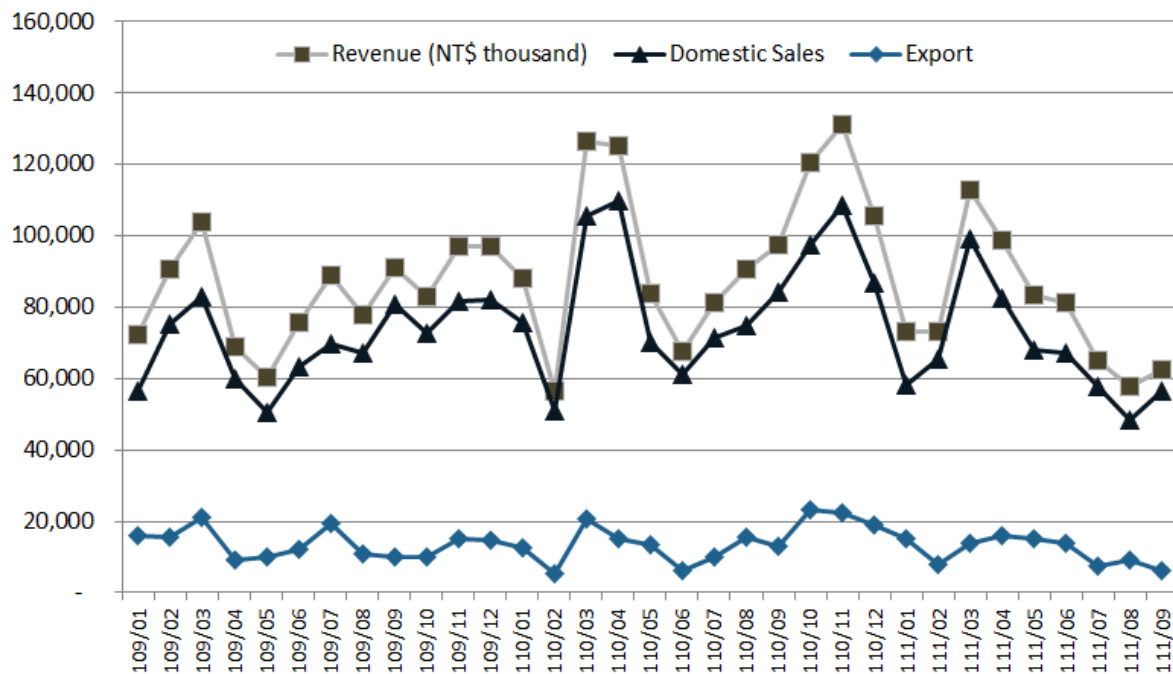
Production Process

From PVC Resin to Final Products



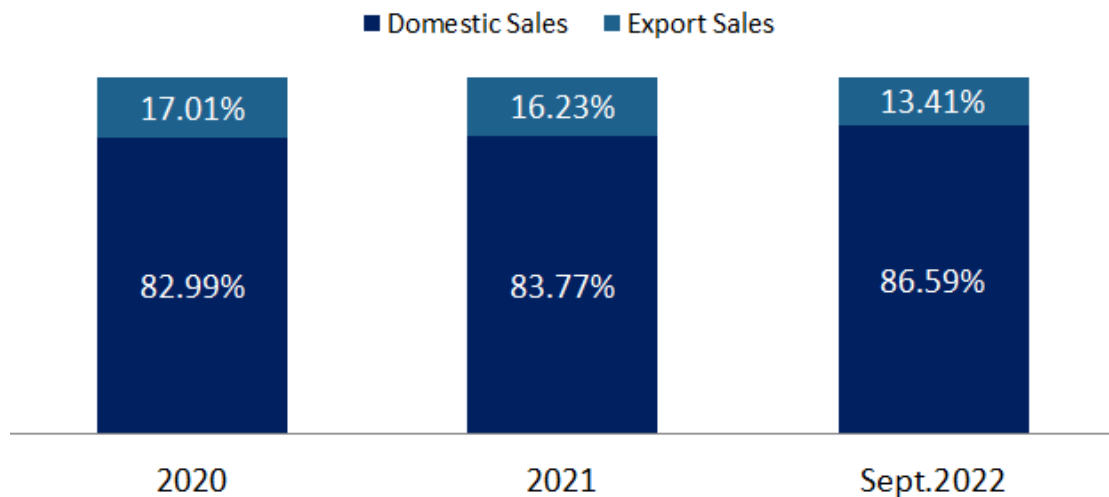
Operational Overview

Monthly Revenue



Operational Overview

Sales Ratio breakdown



Financial Performance

Balance Sheet

In NT\$ thousand

| | 2022/09/30(reviewed) Amount | % | 2021/12/31(checked) Amount | % | 2020/12/31(checked) (Amount) | % |
|---------------------------------|--------------------------------|------------|-------------------------------|------------|---------------------------------|------------|
| Total Current Assets | 914,539 | 75 | 916,778 | 74 | 863,962 | 74 |
| Other Current Assets | 283,851 | 25 | 295,382 | 26 | 300,845 | 26 |
| Total Assets | 1,198,390 | 100 | 1,212,160 | 100 | 1,164,807 | 100 |
| Total Current Liab. | 109,432 | 11 | 157,240 | 10 | 122,750 | 12 |
| Other Current Liab. | 21,829 | 2 | 21,003 | 2 | 22,795 | 2 |
| Total Liabilities | 131,261 | 13 | 178,243 | 12 | 145,545 | 14 |
| Total Equity | 1,067,129 | 87 | 1,033,917 | 88 | 1,019,262 | 86 |
| Total Liab. & Equity | 1,198,390 | 100 | 1,212,160 | 100 | 1,164,807 | 100 |
| Earning Per Share | 19.40 | | 18.79 | | 18.53 | |
| Current ratio(%) | 836.63 | | 583.04 | | 703.84 | |
| Debt ratio(%) | 10.95 | | 14.70 | | 12.50 | |

Financial Performance

Income Statement

In NT\$ thousand

| | 2022 Q3 (reviewed) | % | 2021 Q3 (reviewed) | % | 2020 Q3 (reviewed) | % |
|-------------------------|-----------------------|-----------|-----------------------|-----------|-----------------------|-----------|
| Gross Sales | 707,192 | 100 | 815,852 | 100 | 728,707 | 100 |
| Gross Profit | 132,258 | 19 | 159,019 | 20 | 171,335 | 23 |
| Operating Income | 75,244 | 11 | 104,369 | 13 | 112,425 | 15 |
| Net Income | 132,237 | 19 | 76,160 | 9 | 81,535 | 11 |
| Earning Per Share | 2.40 | | 1.38 | | 1.48 | |



Q & A

Thank you.